



**National Commission for  
Health Education Credentialing, Inc.**

**NCHEC**

1541 Alta Drive, Suite 303

Whitehall, PA 18052

Phone: (888) 624-3248

Fax: (800) 813-0727

<http://www.nchec.org>

# NCHEC's Mission



- ▶ Enhance the professional practice of Health Education by promoting and sustaining a credentialed body of Health Education Specialist
- ▶ To meet this mission
  - ▶ Certifies health education specialists
  - ▶ Promotes professional development
  - ▶ Strengthens professional preparation and practice

# NCHEC's Structure: Non-Profit Agency



# History of NCHEC: Highlights

- ▶ 1970s
  - ▶ National Tasks Force Developed
  - ▶ Role Verification Competencies established
- ▶ 1980s
  - ▶ NCHEC Incorporated
  - ▶ Charter Certification
- ▶ 1990s
  - ▶ First CHES exam given
  - ▶ CHES exam offered twice a year
- ▶ 2000s
  - ▶ 2002: over 8,000 certified, 2005: CUP results released, 2007: CHES Exam revised based on New Framework



# NCHEC's Recent Accomplishments

- ▶ 2008: CHES exam receives “Gold Standard” NCCA Accreditation
- ▶ 2009: The Health Education Job Analysis Project (HEJA) is completed
- ▶ 2010: HEJA results released by NCHEC, SOPHE, & AAHE
- ▶ 2010: Release of revised publications based on the updated Competencies
  - ▶ *A Competency-based Framework for Health Education Specialists 2010*
  - ▶ *The Health Education Specialist: A Companion Guide for Professional Excellence 6<sup>th</sup> Edition*

# NCHEC's Recent Accomplishments

- 2011 Revised CHES exam offered with updated Competencies and Sub-competencies
- 2011 Implementation of the advanced-level certification, MCHES
- 2011 Inaugural MCHES exam is offered simultaneously with the CHES exam

# Credentialing: Description



## Individuals

- Licensing
- Certification
- Registration

## Academic Institutions

- Accreditation



# Quality Assurance Mechanisms

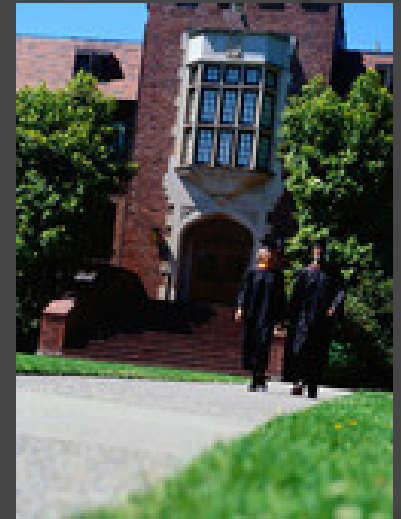
Licensure – Government



Certification – Professional

Registration – State & Local

Accreditation – Program





# CHES Certification

- ▶ Certification developed for:
  - ▶ Health education profession
  - ▶ Mastery of the fundamental skills
  - ▶ Across all practice settings
  - ▶ Voluntary credential

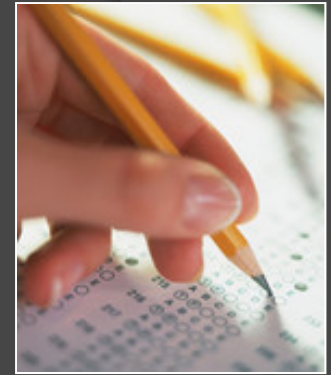




# What is a CHES

- A CHES is an individual that has:
  - Met academic eligibility
  - Passed a written examination
  - Has an ongoing commitment to continuing education and professional development

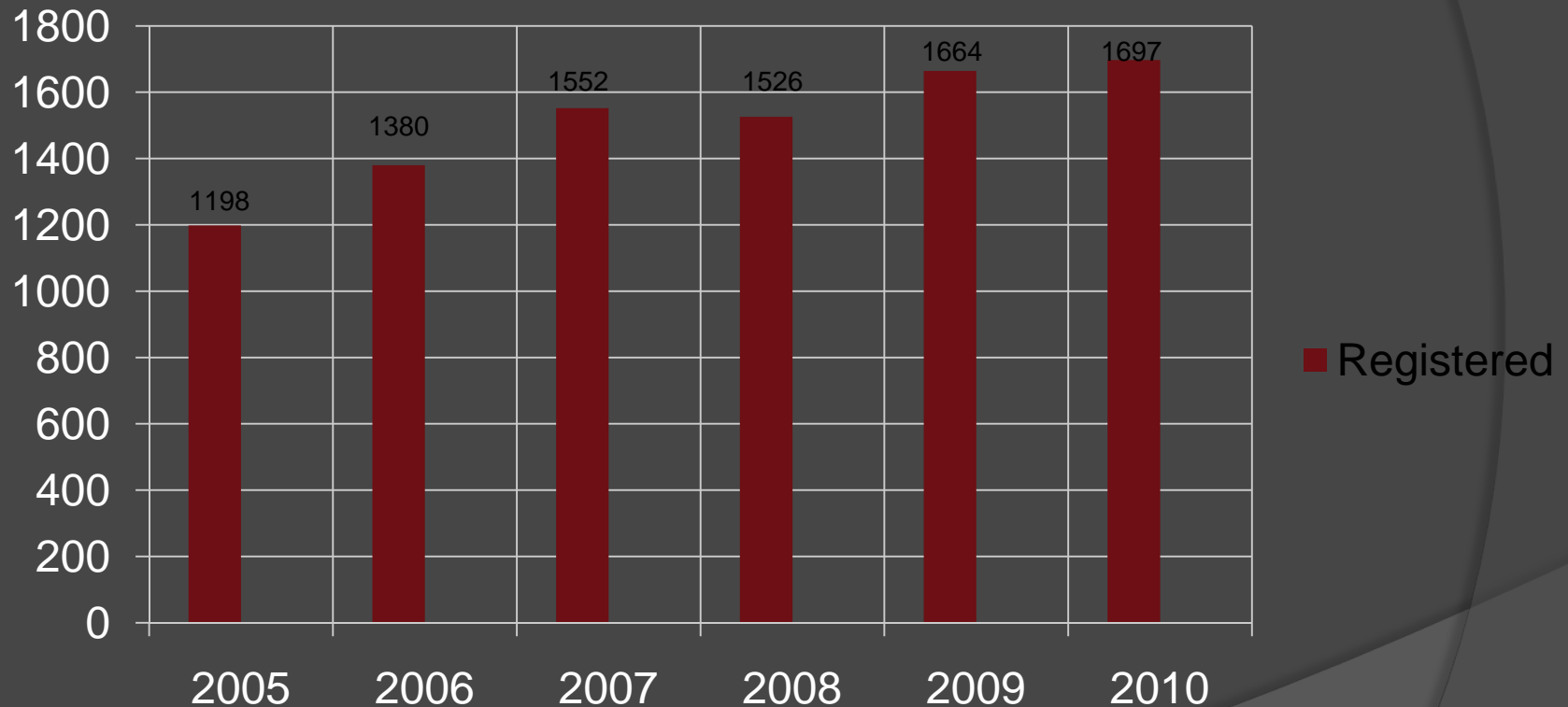
# Benefits of Certification



- ▶ Establishes national standard
- ▶ Attests to individual's knowledge and skills
- ▶ Assists employers in identifying qualified practitioners
- ▶ Promotes sense of pride and accomplishment
- ▶ Promotes continued professional development

# CHES Exam Registrations

## Six Year Comparison of Number of Exam Candidates Registered



# Responsibilities, Competencies & Sub-Competencies

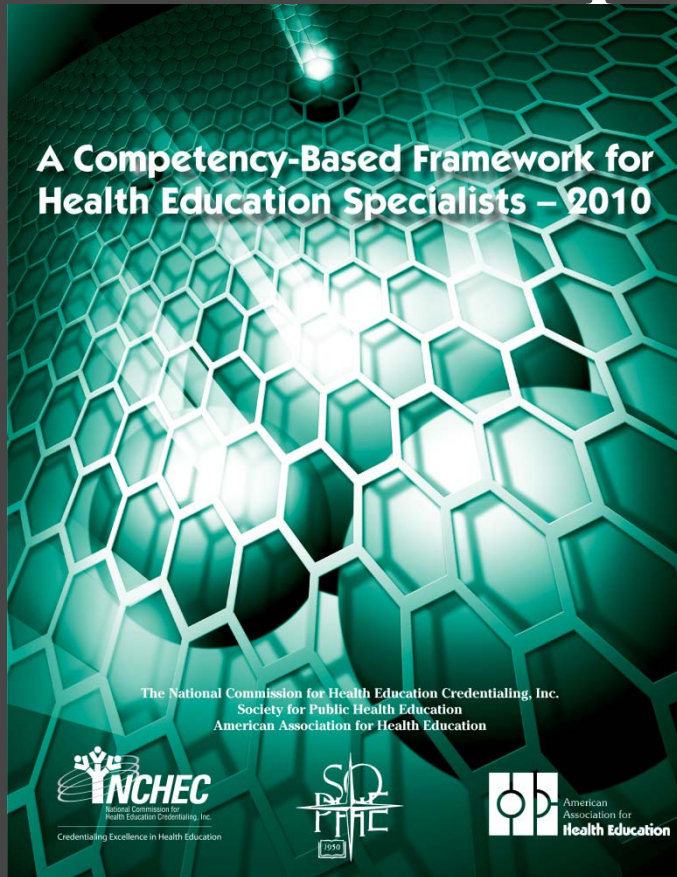
## CUP 2006

- 7 Areas of Responsibility
- 29 Competencies
- 163 Sub-competencies
  - 82 Entry
  - 81 Advanced

## HEJA 2010

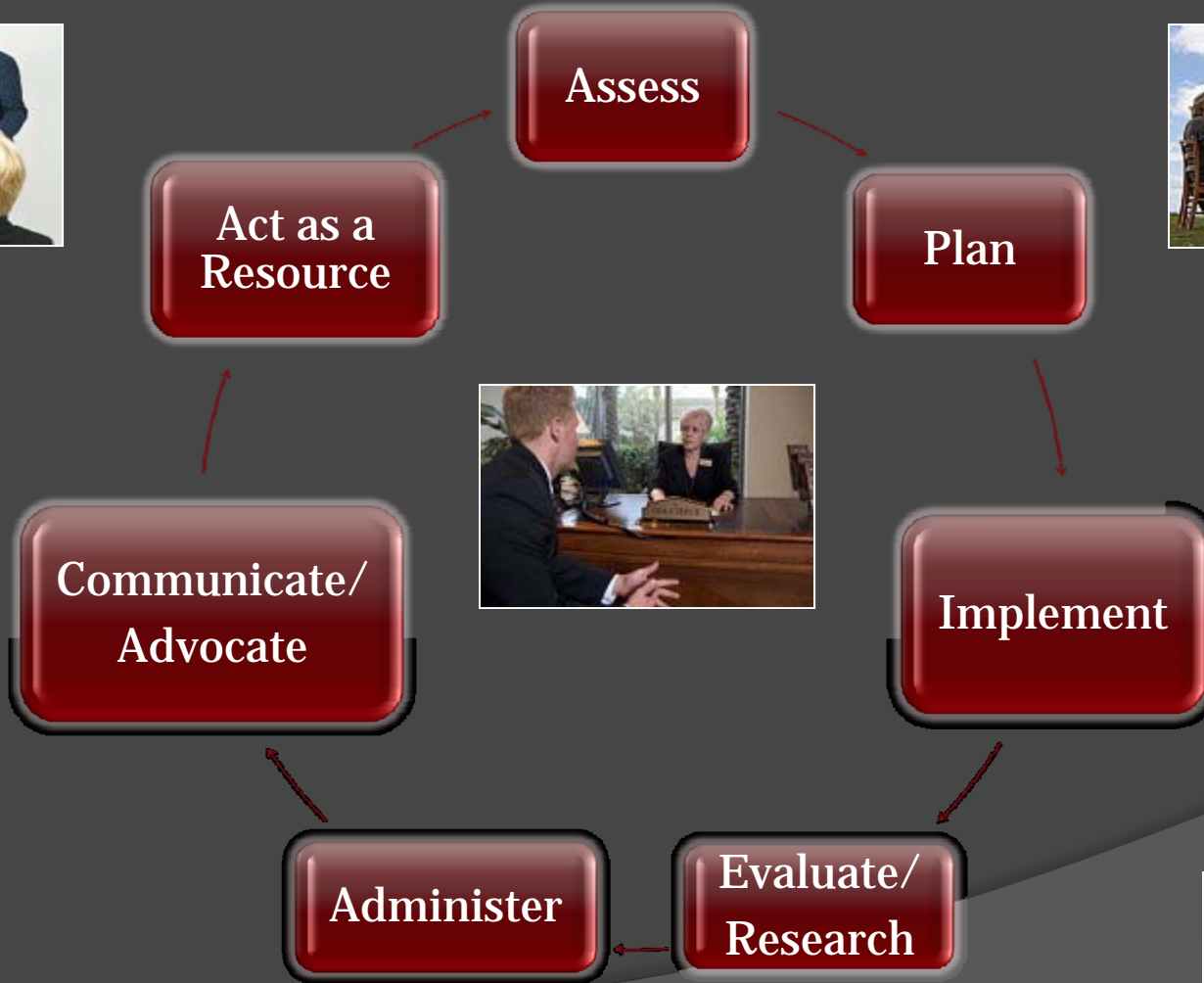
- 7 Areas of Responsibility
- 34 Competencies
- 223 Sub-competencies
  - 162 Entry
  - 61 Advanced

# The *Framework* for Health Education Specialists -2010



- Broad practice standards
- Measurable performance
- Used for curriculum development
- Used to evaluate continuing education programs

# Health Education Specialists: Seven Areas of Responsibilities



# CHES Eligibility



- ▶ Bachelor's, Master's, or Doctoral Degree from an accredited institution, **AND**
- ▶ A **major** in: health education, community health education, public health education, school health education, **OR**
- ▶ 25 semester hours (37 quarter hours) specific to course work related to areas of responsibility and competencies





# Pre-Screening/Review Service



- ▶ Optional service
  - ▶ Not sure whether or not you are eligible?
- ▶ Transcript review
- ▶ Fee

# The CHES Exam

- ▶ Competency-based pencil-and-paper exam
- ▶ 165 multiple-response questions
- ▶ Identifies each Area of Responsibility
- ▶ Offered at over 120 testing locations nationwide
- ▶ Study companion available



# The CHES Examination

## Examination Specifications based on HEJA-2010

No.	Area of Responsibility	%
I	Assess Needs, Assets, and Capacity for Health Education	12%
II	Plan Health Education	15%
III	Implement Health Education	24%
IV	Conduct Evaluation and Research Related to Health Education	15%
V	Administer and Manage Health Education	11%
VI	Serve as a Health Education Resource Person	16%
VII	Communicate and Advocate for Health and Health Education	7%

# Apply for CHES Exam

<b>April Exam</b>	<b>October Exam</b>	<b>Non-Student Fee</b>	<b>Student Fee</b>
1st Registration Deadline: Dec 1 <sup>st</sup>	1 <sup>st</sup> Registration Deadline: Jun 1 <sup>st</sup>	\$240	\$210
2nd Registration Deadline: Jan 2 <sup>nd</sup>	2 <sup>nd</sup> Registration Deadline: Jul 1 <sup>st</sup>	\$250	\$210
3rd Registration Deadline: Feb 1 <sup>st</sup>	3 <sup>rd</sup> Registration Deadline: Aug 1 <sup>st</sup>	\$280	\$210
Final Deadline: Mar 1 <sup>st</sup>	Final Deadline: Sept 1 <sup>st</sup>	\$330	\$265

# Master Certified Health Education Specialist (MCHES) Credential



**1<sup>st</sup> MCHES EXAM: October 15, 2011**

## **ELIGIBILITY:**

### **CHES**

*Minimum of the past 5 continuous years active status*

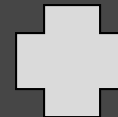
### **Non-CHES**

*Or CHES <5 yrs active status*

Master's degree or higher in Health Education

**OR**

Master's degree or higher with transcript reflecting **25** semester hours addressing the Seven Areas of Responsibility



5 yrs experience as a health education specialist

- *CV/Resume*
- *2 letters of recommendation*



# MCHES Fees & Recertification

- MCHES Exam fees : range from \$250-\$390 based on type of application and submission deadline

	<b>1<sup>st</sup> deadline</b>	<b>2<sup>nd</sup> deadline</b>	<b>3<sup>rd</sup> deadline</b>	<b>Final deadline</b>
<b>MCHES Exam (CHES)</b>	\$250	\$260	\$290	\$340
<b>MCHES Exam (Non- CHES)</b>	\$300	\$310	\$340	\$390

# The MCHES Examination

- 1<sup>st</sup> offered – October 15, 2011
- Style & Structure
  - Provided at the same sites where CHES exam offered
  - 3 hours to complete
  - 165 multiple choice questions; 150 scored, 15 pilot
  - Stand alone & scenario-based multiple choice items
  - Covers all 7 Areas of Responsibility; there are 61 MCHES only sub-competencies

# MCHES Examination Specifications

## Examination Specifications based on HEJA-2010

No.	Area of Responsibility	%
I	Assess Needs, Assets, and Capacity for Health Education	10%
II	Plan Health Education	15%
III	Implement Health Education	20%
IV	Conduct Evaluation and Research Related to Health Education	16%
V	Administer and Manage Health Education	16%
VI	Serve as a Health Education Resource Person	15%
VII	Communicate and Advocate for Health and Health Education	8%



# CHES/MCHES Exam Schedule

Twice  
Each Year

April

October



# CHES/MCHES Certification Requirements

- ▶ Pass written examination
- ▶ Annual \$55.00 renewal fee
- ▶ 75 hours of continuing education with a five-year cycle
- ▶ Recertify at the fifth year if renewal fees are paid and continuing education requirements have been met



# CHES/MCHES Continuing Education

- ▶ Continuing Education Contact Hours (CECH)
  - ▶ 75 are required for the five year recertification



# CECH Categories

## ▶ Category I

- Events offered by providers
- Pre-approved by NCHEC
- Minimum 45 CECH

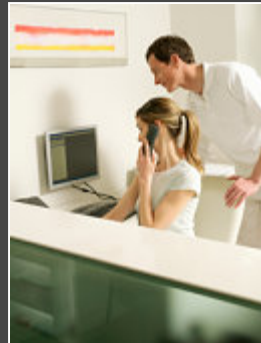
## ⊙ Category II

- Events offered by providers
- Not pre-approved by NCHEC
- Maximum 30 CECH

## ▶ MCHES

- ▶ Required to earn 30 CECH directly related to the advanced-level Sub-competencies from Category I and/or II

# Employment Opportunities



Check out Job Postings at [www.nchec.org](http://www.nchec.org)  
Quick Links Job Postings or  
<http://www.nchec.org/news/docs/jobs.htm>

# NCHEC: Future Goals

- Market CHES and MCHES certification to employers
  - Provide sample job descriptions
- Enhance professional development for CHES and MCHES
  - Assistance to Designated Providers
- Advocate for third-party reimbursement of health education specialists
- Require university accreditation for CHES exam eligibility

# Did You Know?

- Health Education Job Outlook
  - Recognized as a specific occupation—DOL
  - Employment projection—faster than average growth
  - <http://www.bls.gov/oco/oco2003.htm>
- Many employers prefer CHES/MCHES
  - Hiring and promoting health education specialists
  - Check out job postings with *CHES/MCHES preferred or required* at <http://www.nchech.org/news/docs/jobs.htm>
- CHES designation required for health educators
  - Arkansas, New Jersey—other states to follow

# For More Information

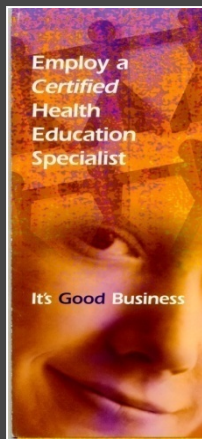
**National Commission for  
Health Education Credentialing, Inc**

**1541 Alta Drive, Suite 303, Whitehall, PA 18052-5642**

**888-NCHEC4U (624-3248)**

**<http://www.nchech.org>**

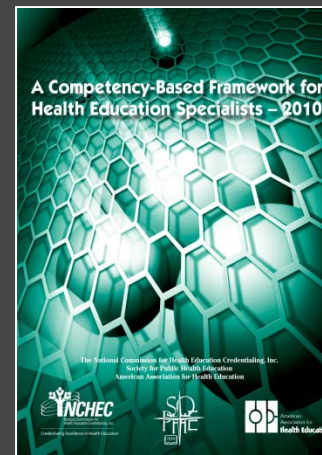
Brochures



Exam Application



Revised Framework



Study Guide

